

# USER'S MANUAL

## Superlink WEB Gateway

## SC-WGWNA-A



This air conditioner complies with EMC Directive 2004/108/EC, LV Directive 2006/95/EC.  
CE marking is applicable to the area of 50 Hz power supply.

Ce climatiseur est conforme à la Directive EMC: 2004/108/EC, LV Directive 2006/95/EC.  
La marque CE s'applique aux régions alimentées en courant de 50 Hz.

Dieses Klimagerät erfüllt die EMC Direktiven 2004/108/EC, LV Direktiven 2006/95/EC.  
Die CE-Märke gilt für Bereiche mit einer Netzstromversorgung von 50 Hz.

Questo condizionatore d'aria è conforme alla Direttiva EMC: 2004/108/EC, LV Direttiva 2006/95/EC.  
Il marchio CE è applicabile alla fascia di alimentazione 50 Hz.

Este acondicionador de aire cumple con la directiva EMC: 2004/108/EC, LV Directiva 2006/95/EC.  
La indicación CE sólo corresponde al área de suministro eléctrico de 50 Hz.

Deze airconditioner voldoet aan EMC Directive 2004/108/EC, LV Directive 2006/95/EC.  
CE-markering is van toepassing op het gebied met een netstroom van 50 Hz.

Este aparelho de ar condicionado está em conformidade com a Directiva EMC 2004/108/EC e a Directiva LV 2006/95/EC.  
A marca CE aplica-se à zona de fornecimento de energia a 50 Hz.

Αυτό το κλιματιστικό είναι σύμφωνο με τις προδιαγραφές της Οδηγίας EMC 2004/108/ΕΚ και της Οδηγίας LV 2006/95/ΕΚ.  
Το σήμα CE ισχύει μόνον σε περιοχές όπου η τροφοδοσία είναι 50 Hz.

PSZ012A042CB

Thank you for purchasing the Mitsubishi Heavy Industries Superlink WEB Gateway SC-WGWNA-A.

Before us, please be sure to read this User's Manual thoroughly for correct use. After reading this manual, please store it in a secure place where it can be accessed easily. In the unlikely event that something that you don't understand, or some serious trouble occurs during operation, be sure to refer to this manual.

In addition, please read this manual in combination with the User's Manual provided with your air conditioning system.



## **Table of Contents**

---

■ Safety Precautions .....	1
■ Introduction .....	2
System Outline .....	2
Personal Computer Environment .....	3
Connections .....	3
Personal Computer Initial Configuration .....	3
■ Operation .....	5
Logging In .....	5
Over View Monitor screen .....	6
Common Operations in Each screen .....	7
Individual Monitor screen .....	8
Control Command screen .....	9
System Stop/Release screen .....	9
Configuration Menu screen .....	10
Air-Con Cell Configuration screen .....	11
Air-Con Configuration File Upload screen .....	12
Air-Con Configuration File Download screen .....	13
Communication/Buzzer Configuration screen .....	14
Link Configuration screen .....	15
Security Configuration screen .....	16
Authentication Configuration screen .....	16
Calendar Configuration screen .....	17
Schedule Master Configuration screen .....	18
Schedule Control screen .....	19
Calender/Schedule Backup File screen .....	20
Date Time Set screen .....	22
NTP Configuration screen .....	23
■ Troubleshooting .....	24

# ■ Safety Precautions

- Before use, please be sure to read these Safety Precautions in order to ensure proper operation.
- The safety precautions included here are categorized as either “⚠ Warning” or “⚠ Caution,” those items which could lead to death or serious injury, or other major consequences if this product is used incorrectly have been listed under the “⚠ Warning” category. Incorrect use under the “⚠ Caution” category could lead to serious consequences depending on the conditions, so these items should also be treated as of major importance.
- Symbols used in this manual have the following meanings.

	Be sure to follow the instructions given.		Be sure to perform this construction activity with all equipment, etc. grounded.
---	---	---	--

- After you are finished reading this manual, be sure to keep it in a safe place where it can be accessed easily. Also, if the persons using this product are different individuals, please give this manual to them and have them read it thoroughly.

## ■ Installation Precautions

### ⚠ Warning



**Please ask the dealer where you purchased this product to install it.**

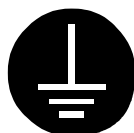
If you try installing it yourself, and make a mistake, it could lead to electric shock, fire or other serious consequences.



**Please place this product in a location that can be locked for the sake of security.**

The WEB Gateway unit is equipped with an external power supply terminal block. Please be sure to place it in a protected location to prevent electric shock and wrongful operation of the power switch.

### ⚠ Caution



**Be sure to ground this unit.**

Do not attach the ground wire to a gas pipe, tap water line, lightning rod or telephone ground wire. If grounding is imperfect, it could cause electric shock.

## ■ Installation Usage

### ⚠ Warning



**Please do not take the lid off this product.**

This product has several precision circuit boards. If you take the lid off, and make a mistake, this product could be broken.

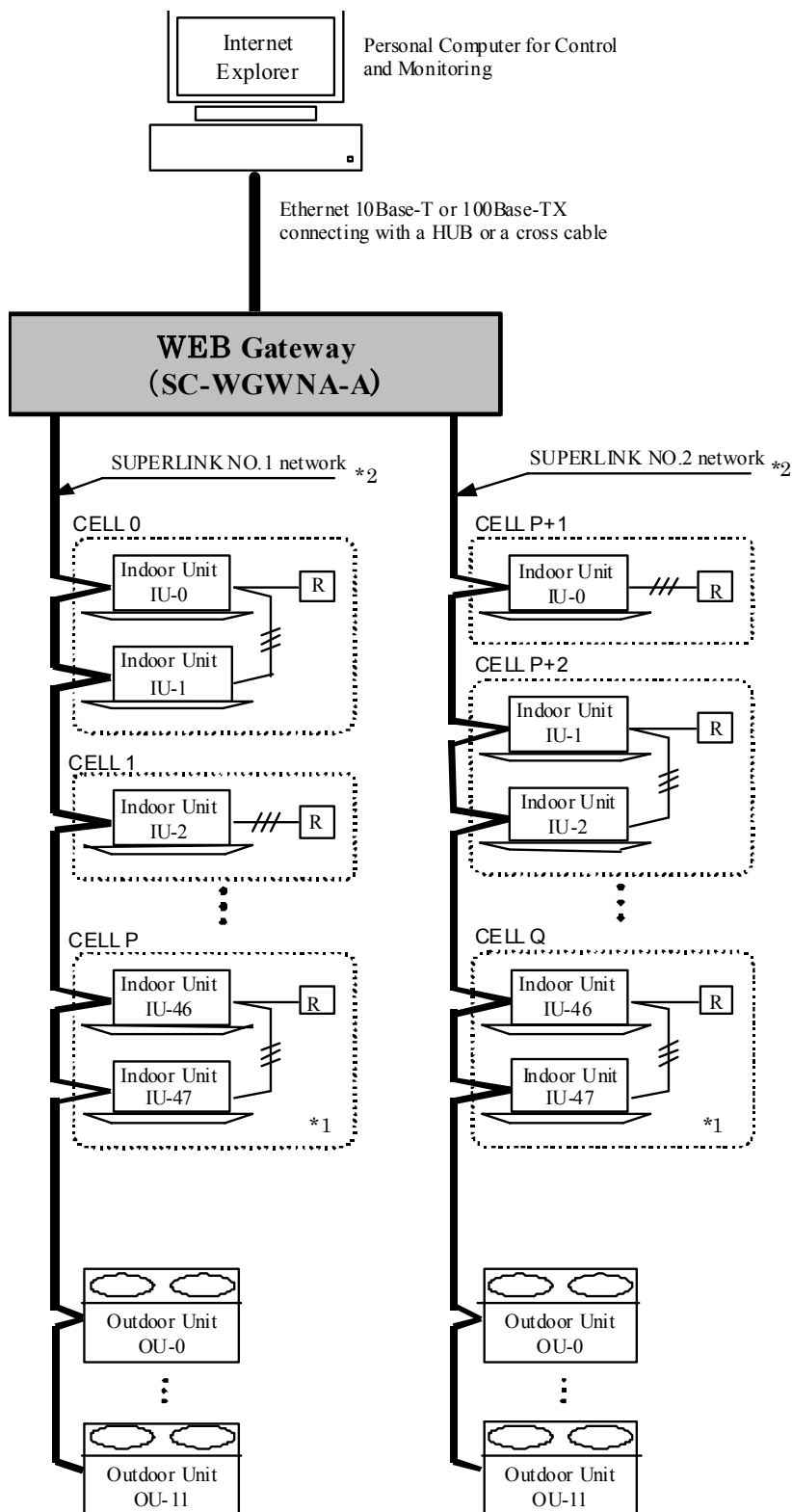
# ■ Introduction

Superlink WEB Gateway is a device which carries out centralized monitoring and control of packaged air-conditioners from a personal computer.

## ■ System Outline

The diagram below shows the system configuration. The WEB Gateway is connected to the personal computer used for monitoring and control by Ethernet cable.

A logical unit of monitoring and control is the “Air-con Cell” which consists of indoor units and corresponds to a remote controller group.



\*1:Max 64 indoor units can be connected in New SUPERLINK system for one SUPERLINK network.

Max 48 indoor units can be connected in Previous SUPERLINK system for one SUPERLINK network.

2: On new SUPERLINK system, the WEB Gateway can be switched to work in one SUPERLINK network and Max. 128 indoor units can be connected to the SUPERLINK network.

Consult with the dealer to switch the WEB Gateway.

## ■ Personal Computer Environment

CPU	500 MHz or higher
Memory	512 MB or above (1GB or above is recommended)
OS	Windows 2000 or Windows XP (Home/Professional) Windows Vista SP1 or above on some conditions (See p. 14)
Monitor	Capable of 1024 x 768 or higher resolution display monitor. (1280 x 1024 is recommended)
Browser	Internet Explorer version 6 or 7

## ■ Connections

### ● If a private Ethernet connection is used (recommended)

This method is used to set up a **private** connection between WEB Gateway and the personal computer used for monitoring and control.

#### **Connection Method**

Connect the WEB Gateway and personal computer directly using a 10BASE-T or 100BASE-TX Ethernet cable (cross cable).

If a HUB is used, do not connect other devices to that HUB.

### ● If an Internet or intranet connection is used

If WEB Gateway is connected via the Internet or intranet (office LAN) environment, please consult with the dealer. It is possible for them to arrange for connections on a charged work basis.

## ■ Personal Computer Initial Configuration

### ● Configuration in the case of an private Ethernet connection

Communications settings (TCP/IP settings) in the monitoring and control personal computer are necessary. For details, please read the operation manual supplied with your personal computer.

If this WEB Gateway is used as the factory set IP address, the setting for a PC address is as shown below.

IP Address	192.168.0.1 - 192.168.0.254 (However, WEB Gateway uses 192.168.0.110, so use an IP address other than this.)
Subnet Mask	255.255.255.0
Default Gateway	Not specified
Preferred DNS Server	Not specified
Alternate DNS Server	Not specified

### ● Configuration in the case of Internet or intranet connections

Please consult with the dealer. It is possible for them to arrange for connections on a charged work basis.

## ● Browser (Internet Explorer) Configuration

Open Internet Explorer, then select “Internet Options” from the “Tools (T)” Menu at the top of the screen and carry out the following settings.



- In “General”  
Home Page <http://192.168.0.110/en>  
(If you changed the IP address of the WEB Gateway, you have to input that IP address, instead of 192.168.0.110, in the address column, the WEB Gateway login screen will open when your browser is started.)
- In “Security”  
Internet Default Level “Medium”  
After clicking on the Internet tab, click on the “Default Level” button.  
Local Intranet Default Level “Medium-low”  
After clicking on the Local Intranet tab, click on the “Default Level” button.
- In “Privacy” Default Level “Medium”  
Click the “Default” button.  
If the privacy setting is set on “Medium-high” or higher, WEB Gateway cannot be used, so be sure to set the default value on “Medium.”
- In “Connections” Set it so a proxy server is not used.
- In “Advanced” Default Value  
It is recommended that the browser be used with the default values. Click the “Restore Defaults” button.

When you are finished with all the settings, click the “Apply” button, then click the “OK” button.

# ■ Operation

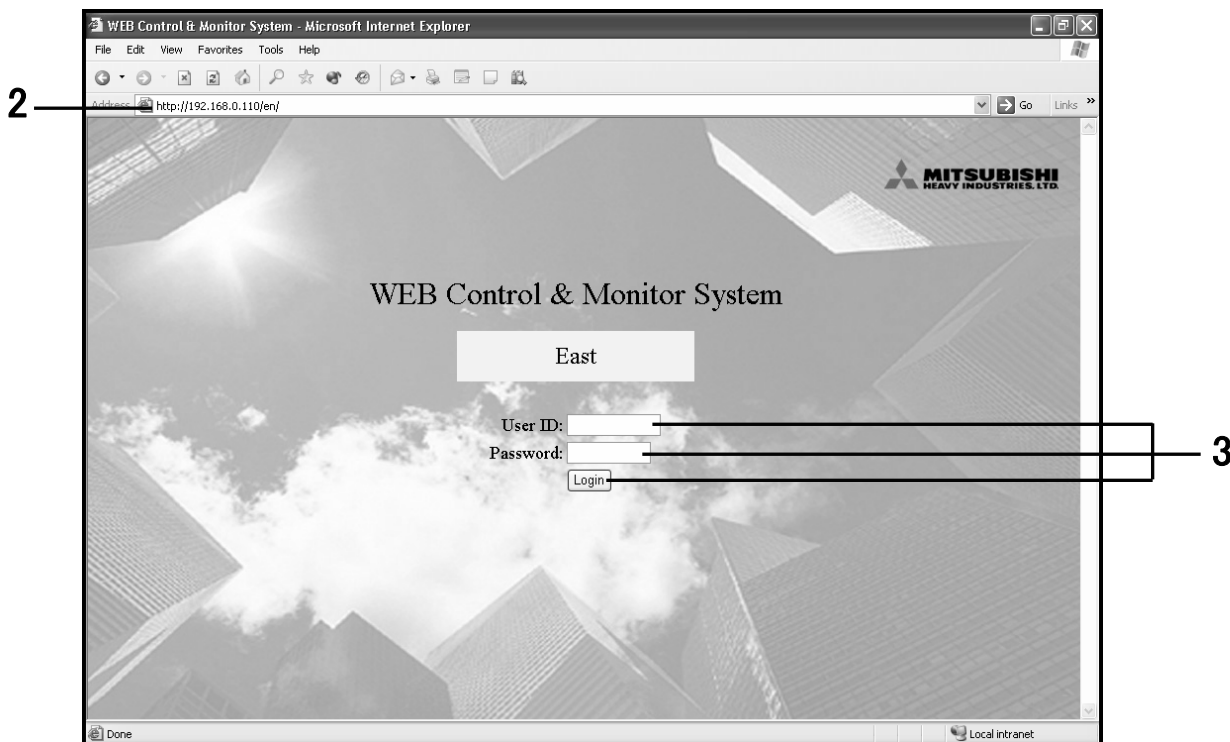
## ■ Logging In

The login screen is the starting screen for WEB Gateway. The login screen is displayed by inputting the URL of the WEB Gateway from the personal computer's WEB browser.

**1. Start the personal computer's browser (Internet Explorer).**

**2. Input the following URL, <http://192.168.0.110/en> in the address bar, then press the Enter key.**

If your WEB Gateway's IP address has been changed, the above IP address "192.168.0.110" should be replaced by the new IP address.



**3. Input the User ID and Password, then click the Login button.**

This screen is where you log in to WEB Gateway and where users who are performing control and monitoring operations have their User ID and password verified. There are differences in authority depending on the user who logs in, with the following three categories of authority.

System Administrator	Can operate all screens.
Control and Monitoring User	Cannot operate the Configuration menu.
Monitoring User	Is authorized to use the monitoring screen only and cannot perform any control operations.

• User ID and Password of each user when shipped from the factory

User Category	User ID	Password
System Administrator	Admin	123456
Control and Monitoring User	Controller	123456
Monitoring User	User	123456

### Note

The User ID and Password can be changed in the Authentication Configuration screen. (See p. 16.)

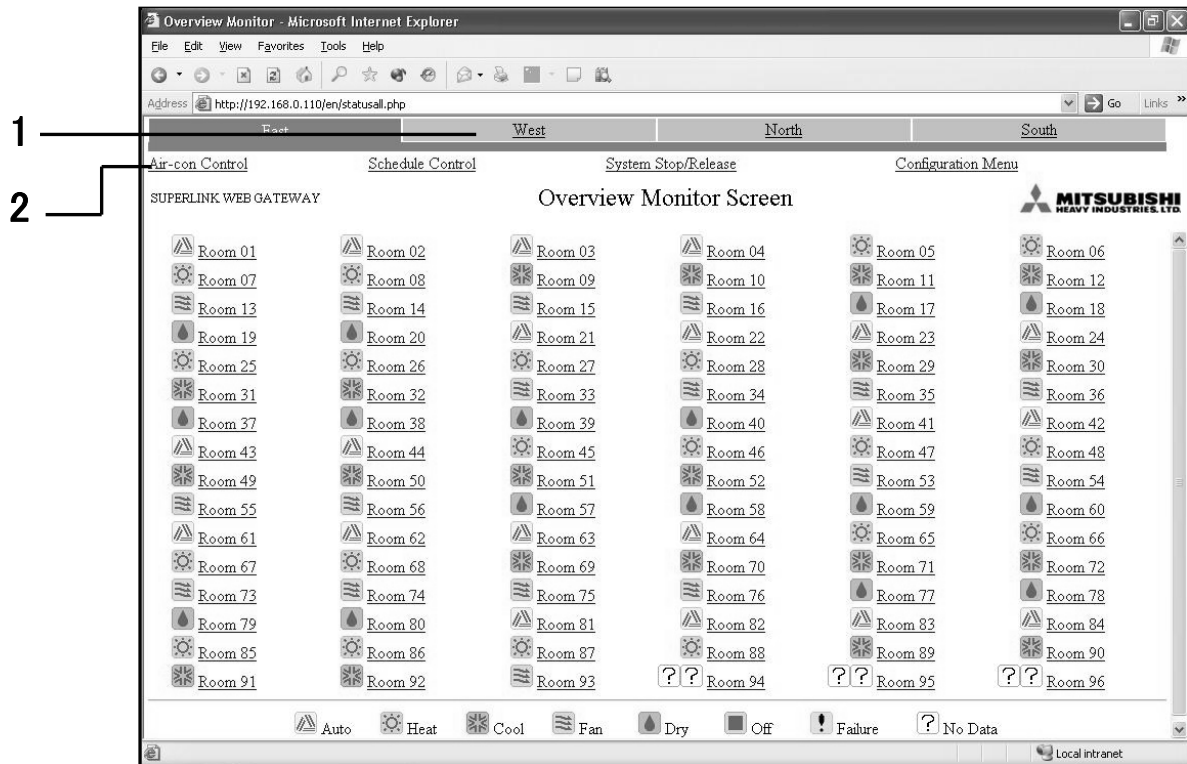
## ■ Over View Monitor screen

This screen is for monitoring the overview of the whole packaged air-conditioner system on the one screen. It is capable of monitoring up to 96 air-con cells (indoor unit remote controller group connection units). It displays the name of each air-con cell, an error display icon, and On/Off/Operation Mode icon.

This screen is displayed when you log in.

### Note

- The Over View Monitor screen is refreshed automatically (automatic update) at regular intervals. Refreshing the screen may take several seconds depending on the network's status and the personal computer's performance. The refresh interval can be set at between 10 seconds and 60 seconds. (See p. 14.)
- The characters and icons on the screen might move slightly at the time of redraw, but this is a characteristic of Internet Explorer.

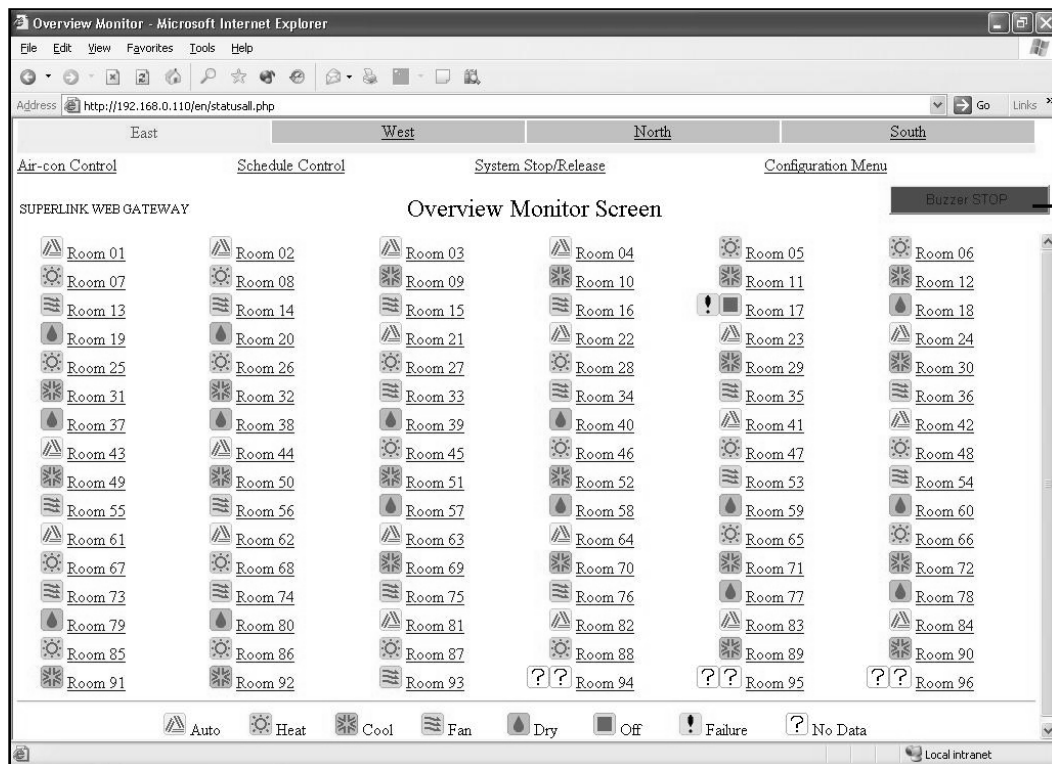


**Over View Monitor screen**



- When the “Buzzer ON” is selected on the Communication/Buzzer Configuration screen, the alarm buzzer function that raises the warning by sounding the buzzer when any error has occurred on an air-con cell, is enabled. The alarm buzzer function operates not only on this screen but also when whichever of screens on this Gateway is displayed.

When the buzzer is sounding, the Logo section shown at the right side of the screen title on all screens changes to the Buzzer stop button. Clicking the Buzzer stop button stops the buzzer sound.



**Overview monitor screen when the buzzer is sounding**

## ■ Common Operations in Each screen

- 1. Displaying a different WEB Gateway** (when multiple WEB Gateways are connected)  
Currently, the Over View Monitor screen of the WEB Gateway on the left end is displayed. To display the screen of other Gateways, click the link characters for the name of the WEB Gateway on the right side.
- 2. Displaying a different function screen**  
To display each function screen, click the link characters (“Air-con Control”, “Schedule control”, etc.).
- 3. To stop the buzzer**
  - Click the “Buzzer stop” button. This stops the buzzer sounding on the Over View Monitor PC connected to this Gateway.
  - Since the volume of buzzer sound is set on the Over View Monitor PC, adjust the volume, if necessary, on the PC.
  - When the buzzer sounds while this screen is minimized, maximize the screen first and then click the Buzzer stop button.
  - When another application is executing on the front window and the Internet Explorer is put on the background, bring this screen to the front and then click the Buzzer stop button.

### Note

If the login screen is displayed when you click the link on the screen such as “Air-con Control”, that means the power of the WEB Gateway turned off and started again. Please login again. (See p.5.)

## ■ Individual Monitor screen

This screen is for indicating the detail information on one of the air-con cells by the pop-up window in front of the Over View Monitor screen.

### 1. Click on the name of the air-con cell you would like to monitor.

The individual monitor screen will be displayed in a pop-up window.

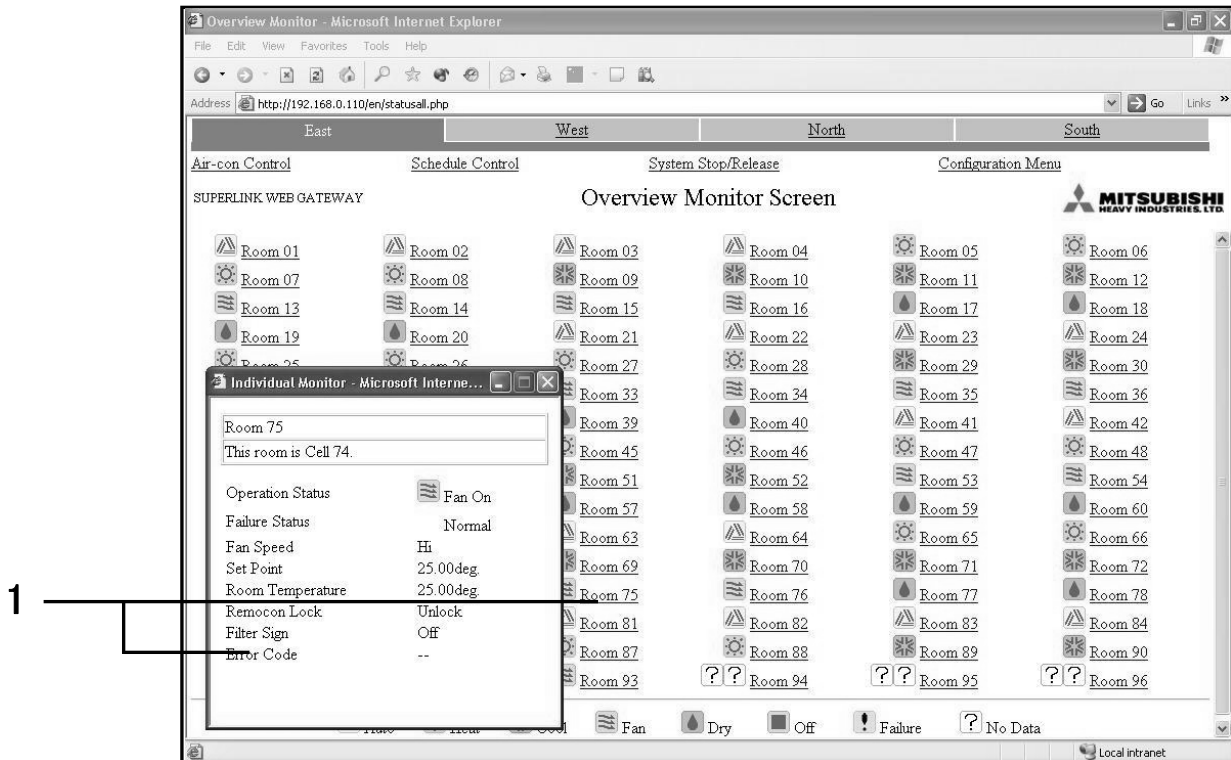
#### Note

- The Individual Monitor screen is refreshed automatically (automatic update) at regular intervals. Redrawing the screen may take several seconds depending on the network's status and the personal computer's performance.

The refresh interval can be set at between 10 seconds and 60 seconds. (See p. 14.)

- The characters and icons on the screen might move slightly at the time of redraw, but this is a characteristic of Internet Explorer.

After the pop-up window opens, clicking on different air-con cell name will cause the previously opened pop-up window to close and a new pop-up window to open in the same place.



## ■ Control Command screen (Admin or Controller can use this screen.)

This screen is for control command input operation to each air-con cell.

### 1. Click the “Air-con Control” link in the Over View Monitor screen.

The Control Command screen will be displayed. (Drawing the screen may take several seconds depending on the state of the network, etc.)

### 2. Select control command values from the pull-down menus for each control item.

Select each control command value.

### 3. Click the Set button.

**Note** In some models of indoor units, cannot be set to Powerful, and cannot be display to it.

Air-con Name	On/Off	Mode	Fan Speed	Set Point	Remocon Lock	Filter Sign	Failure
ALL	On	Auto	High	25.0	Unlock	Off	
Room 01	On	Auto	High	25.0	Unlock	Off	
Room 02	Off	Auto	High	25.0	Unlock	Off	
Room 03	On	Auto	High	25.0	Unlock	Off	
Room 04	On	Auto	High	25.0	Unlock	Off	
Room 05	On	Heat	High	25.0	Unlock	Off	
Room 06	On	Heat	High	25.0	Unlock	Off	
Room 07	On	Heat	High	25.0	Unlock	Off	
Room 08	On	Heat	High	25.0	Unlock	Off	
Room 09	On	Cool	High	25.0	Unlock	Off	
Room 10	On	Cool	High	25.0	Unlock	Off	
Room 11	On	Cool	High	25.0	Unlock	Off	
Room 12	On	Cool	High	25.0	Unlock	Off	
Room 13	On	Fan	High	25.0	Unlock	Off	
Room 14	On	Fan	High	25.0	Unlock	Off	

This screen is not refreshed automatically

Send Screen Refresh

## ■ System Stop/Release screen (Admin or Controller can use this screen.)

This screen is for operation of stops or releases all the air-conditioners connected to WEB Gateway.

### <System Stop>

### 1. Click the “System Stop” button.

All the indoor units under this Gateway immediately stop and set as the Remote controller Lock mode, then the screen will return to the Over View Monitor screen.

**Note** Operation of air-cons from the Control Command screen is possible even during a system stop.

Currently, System is in the normal operation.

System Stop command will be sent by depressing the button below.

Caution! Please do not depress the button below except for emergency.

System Stop

## <System Release>

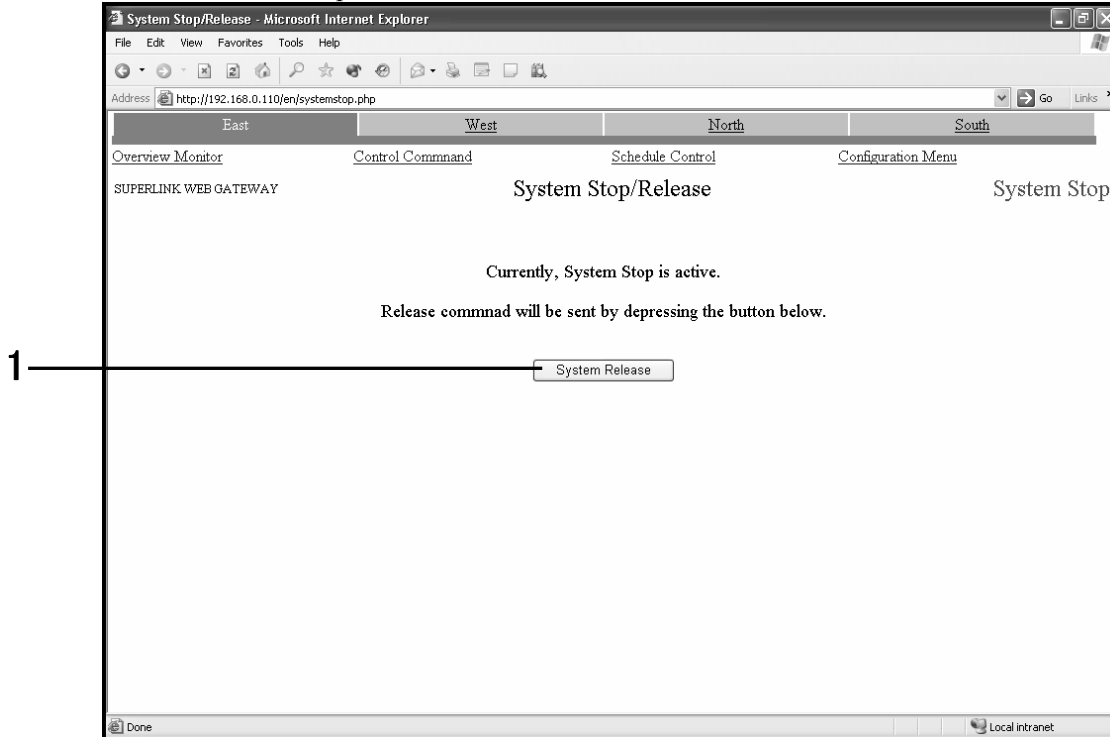
### 1. Click the “System Release” button during a System Stop.

The stopped state is system release in all air-cons, the system returns to the Over View Monitor screen and the previously set operation schedule is enabled from that point on.

### 2. Operating Each Air-con

Even when the system stop condition becomes released, the air-cons will not start operating, so start operation manually.

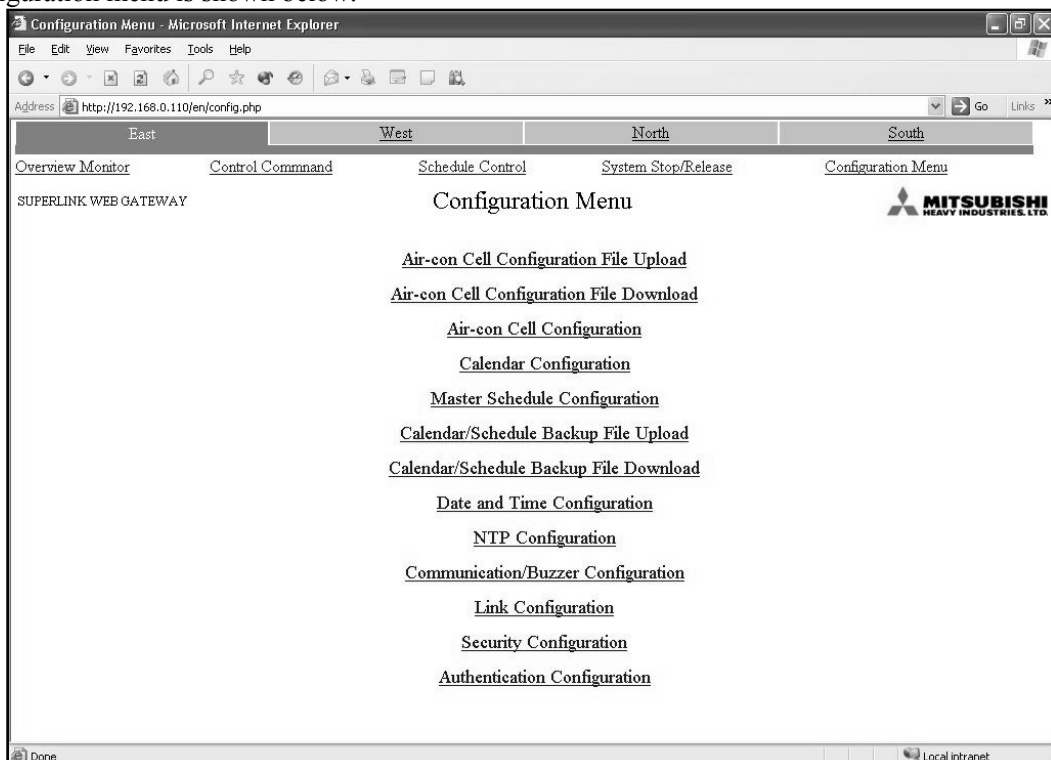
All Remote controller operation become unlock after released.



## ■ Configuration Menu screen (Admin can use this screen.)

This screen can only be used by the user who has been verified by system administrator logging in. This screen is displayed when “Configuration Menu” link is clicked on from each of the other screens.

The Configuration menu is shown below.



## ■ Air-con Cell Configuration screen (Admin can use this screen.)

This screen is used to define each air-con cell which consists a number of indoor units and set names for each cell, such as “Conference Room A.”

### 1. Click “Air-con Cell Configuration” in the Configuration Menu screen. (See p. 10.)

A list of indoor units which comprise each air-con cell will be displayed.

(Drawing the screen may take several seconds depending on the network state.)

### 2. Assign air-con cell numbers by giving each one a SL (Superlink) System No. and SL (Superlink) Address.

Inputting the same air-con cell No. for multiple indoor units (SL Addresses) defines them as being in the same group, that is an air-con cell. Corresponds an air-con cell to a remote controller group.

### 3. Input the air-con cell names and descriptions.

You can input the air-con cell name and description on the line of the indoor unit with the lowest SL Address in the air-con cell.

#### Note

- It is possible to input an air-con cell name with up to 16 characters and description with up to 64 characters.
- The contents of the Air-con Cell Configuration cell settings can be saved in CSV files and uploaded. (See p. 12.)

### 4. Click the Set button.

The screenshot shows the 'Air-con Cell Configuration' screen in a Microsoft Internet Explorer browser. The browser window title is 'Air-con Cell Configuration - Microsoft Internet Explorer'. The address bar shows 'http://192.168.0.110/en/pacconfig.php'. The page has a navigation bar with tabs: 'East', 'West', 'North', and 'South'. Below the navigation bar, there are links: 'Overview Monitor', 'Control Command', 'Schedule Control', 'System Stop/Release', and 'Configuration Menu'. The main content area is titled 'Air-con Cell Configuration' and features a table with the following columns: 'SL Sys No.', 'SL Address', 'Air-con Cell No.', 'Air-con Cell Name', and 'Description'. The table contains 15 rows of data, each representing a room and its corresponding air-con cell. A 'Set' button is located at the bottom of the table. A large number '2' is placed to the left of the table, and a large number '4' is placed below the 'Set' button. A large number '3' is placed to the right of the 'Set' button.

SL Sys No.	SL Address	Air-con Cell No.	Air-con Cell Name	Description
S1	U00	C00	Room 01	This room is Cell 00.
S1	U01	C01	Room 02	This room is Cell 01.
S1	U02	C02	Room 03	This room is Cell 02.
S1	U03	C03	Room 04	This room is Cell 03.
S1	U04	C04	Room 05	This room is Cell 04.
S1	U05	C05	Room 06	This room is Cell 05.
S1	U06	C06	Room 07	This room is Cell 06.
S1	U07	C07	Room 08	This room is Cell 07.
S1	U08	C08	Room 09	This room is Cell 08.
S1	U09	C09	Room 10	This room is Cell 09.
S1	U10	C10	Room 11	This room is Cell 10.
S1	U11	C11	Room 12	This room is Cell 11.
S1	U12	C12	Room 13	This room is Cell 12.
S1	U13	C13	Room 14	This room is Cell 13.
S1	U14	C14	Room 15	This room is Cell 14.

## ■ Air-con Configuration File Upload screen (Admin can use this screen.)

This screen is used to upload Air-con Cell Configuration files from the personal computer to WEB Gateway.

An Air-con Cell Configuration file is a CSV file in which data recodes are indexed by air-con cell No., and the SL system No., SL address, air-con cell name and description of each indoor unit comprises the air-con cell. If a CSV file (PACinfo.csv) in a personal computer is uploaded to the WEB Gateway, the contents of this file will be used for the Air-con Cell Configuration screen. A CSV file name is case sensitive, so care should be taken to input them correctly as “PACinfo.csv”.

<Examples of PACinfo.csv files>

Air-con Cell No.	SL System No.	SL Address	Indoor Cell Name	Description
C00	S1	U00	Room 01	This room is Cell 00.
C01	S1	U01	Room 03	This room is Cell 01.
C01	S1	U02		
C02	S1	U04	Room 04	This room is Cell 02.
:	:	:	:	:

<How to interpret the above table.>

- The indoor unit with the SL address U00 in Superlink system SL1 is set in air-con cell No. C00.
- Indoor units with SL address U01 and U02, respectively, in Superlink system SL1, are set in air-con cell C01, and these two indoor units are grouped together as a single logical object. The indoor unit with the lower SL address becomes the representative unit in the cell, and the indoor cell name and description are set.
- The address U03 is omitted, but this indicates that indoor unit U03 is not currently connected. (Even if the affected line is deleted, the setting shows that the indoor unit is not connected.)
- Air-con cell No. designation does not have to be in serial order, but in the Over View Monitor screen the air-con cells are displayed in the order of their cell No.

### 1. In the Configuration Menu, click “Air-Con Cell Configuration File Upload”.

(See p. 10.)

Air-con Cell Configuration File Upload - Microsoft Internet Explorer

Address: http://192.168.0.110/en/upload.php

East West North South

Overview Monitor Control Command Schedule Control System Stop/Release Configuration Menu

SUPERLINK WEB GATEWAY Air-con Cell Configuration File Upload

MITSUBISHI HEAVY INDUSTRIES, LTD.

Air-con Cell Configuration File :  Browse...

Upload

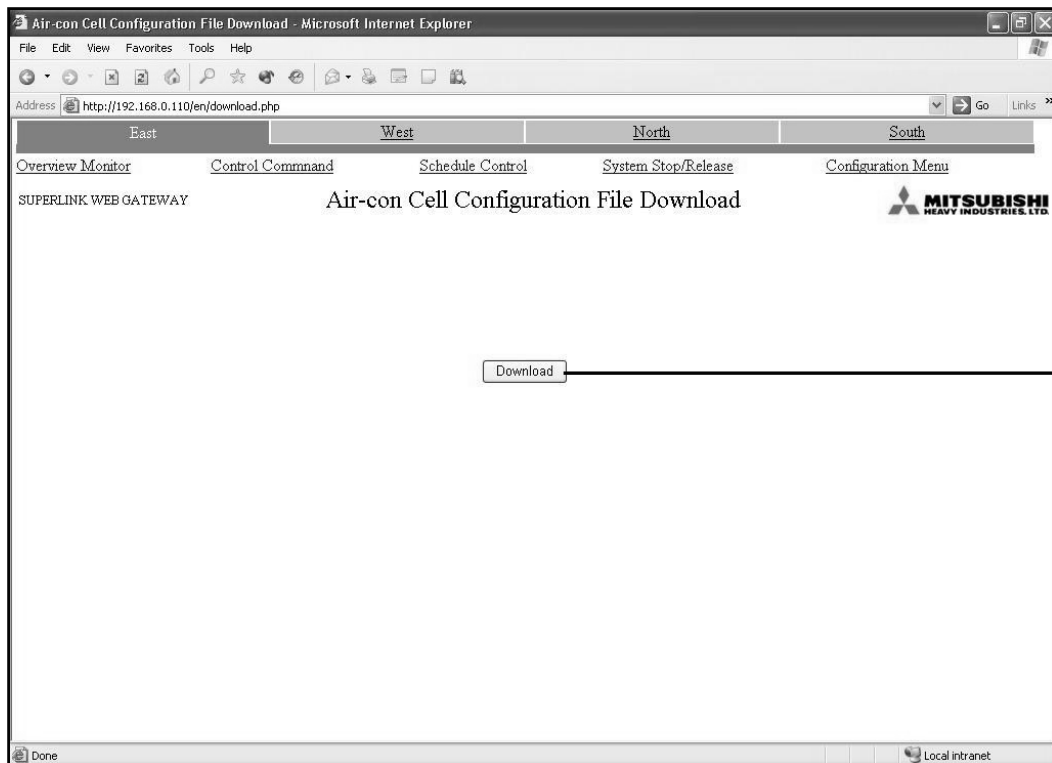
### 2. Click the Browse button and select “PACinfo.csv”.

### 3. Click the “Upload” button.

## ■ Air-Con Configuration File Download screen (Admin can use this screen.)

This screen is used to download an Air-con Configuration file to the personal computer and save them as CSV files.

1. In the Configuration Menu, click “Air-con Cell Configuration File Download”. (See p. 10.)



2. Click “Download” button, then select “Save”.
3. Specify the save destination, then save the file.

The “PACinfo.csv” file will be saved.

### Note

If Excel is installed in your personal computer, double clicking on the PACinfo.csv file causes Excel to open and enables direct editing of the file.

### Note

In case that the WEB Gateway is used in one SUPERLINK network and maximum 128 indoor units are connected to the SUPERLINK network, the “PACinfo\_128.csv” file will be saved. In the file, SL Address is described in three digits as “U000 - U127”.

## ■ Communication/Buzzer Configuration screen (Admin can use this screen.)

This screen is used to set the WEB browser's monitoring screen refresh interval.

1. In the Configuration Menu, click "Communication/Buzzer Configuration". (See p. 10.)

2. Set the screen refresh interval.

Set the screen refresh interval at between 10 and 60 seconds. (It is set at 30 seconds at the factory.)

### Note

The maximum delay time from the time the air-con's status changes until the change is reflected in the personal computer screen is virtually decided by this setting. If the time set for this interval is short, there may be some flickering on the screen from the WEB browser, so it is recommended that the refresh time be set at about 30 seconds.

3. When using the alarm buzzer function, put a tick (✓) in the "Buzzer ON" check box.

4. In the case of the IP address change.

4-1. Input the desired IP address and the subnet mask.

### Caution

If a wrong IP address is input, the WEB Gateway will not be accessed anymore.

Ex: Correct: 192.10.1.1 Incorrect: 192.010.001.001

4-2. If necessary, input the default Gateway IP address.

### Note

Consult with the network administrator if a default Gateway setting is necessary.

5. In the case of Windows Vista is used.

5-1. Put a tick (✓) in the "Display Restart Message" check box.

5-2. Set the display restart message day(s).

Set the display restart message day(s) at between 1 and 90 days. (It is set at 30 days at the factory.)

6. Click the "Set" button.

Communication/Buzzer Configuration - Microsoft Internet Explorer

Address: http://192.168.0.110/en/communicationconfig.php

East West North South

Overview Monitor Control Command Schedule Control System Stop/Release Configuration Menu

SUPERLINK WEB GATEWAY Communication/Buzzer Configuration MITSUBISHI HEAVY INDUSTRIES, LTD.

Screen Refresh Interval (sec) 30 (10-60) 2

Buzzer ON ☐ 3

IP Address 192.168.0.110 4-1

Subnet Mask 255.255.255.0 4-2

Default Gateway

Display Restart Message ☐ 5-1

Display Restart Message After (days) 30 (1-90) 5-2

Attention:

- Don't input "0" at the front of each octet.
- Ex: Correct: 192.168.1.110 Incorrect: 192.168.001.110

6 Set

Done Local intranet



## ■ Link Configuration screen (Admin can use this screen.)

This screen is used to set the WEB linkages among a number of WEB Gateways.

**1. In the Configuration Menu, click “Link Configuration”.** (See p. 10.)

**2. Input Link Names and IP addresses of the destination WEB Gateways.**

### Note

The position of an input column determines the position of the Linked Name Tab on top of other screens. By clicking a Link Name Tab, the current screen will be switched to the corresponding screen on the other linked WEB Gateway.

This WEB Gateway recognizes the input name as its own Link Name when the input IP address matches its own IP address. Then its own Link Name Tab is displayed with dark gray.

**3. Click the “Set” button.**

Link Configuration - Microsoft Internet Explorer

File Edit View Favorites Tools Help

Address <http://192.168.0.110/en/linkgwconfig.php> Go Links »

East West North South

Overview Monitor Control Command Schedule Control System Stop/Release Configuration Menu

SUPERLINK WEB GATEWAY

Link Configuration

MITSUBISHI HEAVY INDUSTRIES, LTD.

Link Name 1	Link Name 2	Link Name 3	Link Name 4
East	West	North	South
IP Address	IP Address	IP Address	IP Address
192.168.0.110	192.168.0.111	192.168.0.112	192.168.0.113

**Attention:**

- Don't input "0" at the front of each octet.  
Ex: Correct: 192.168.1.110 Incorrect: 192.168.001.110

Set

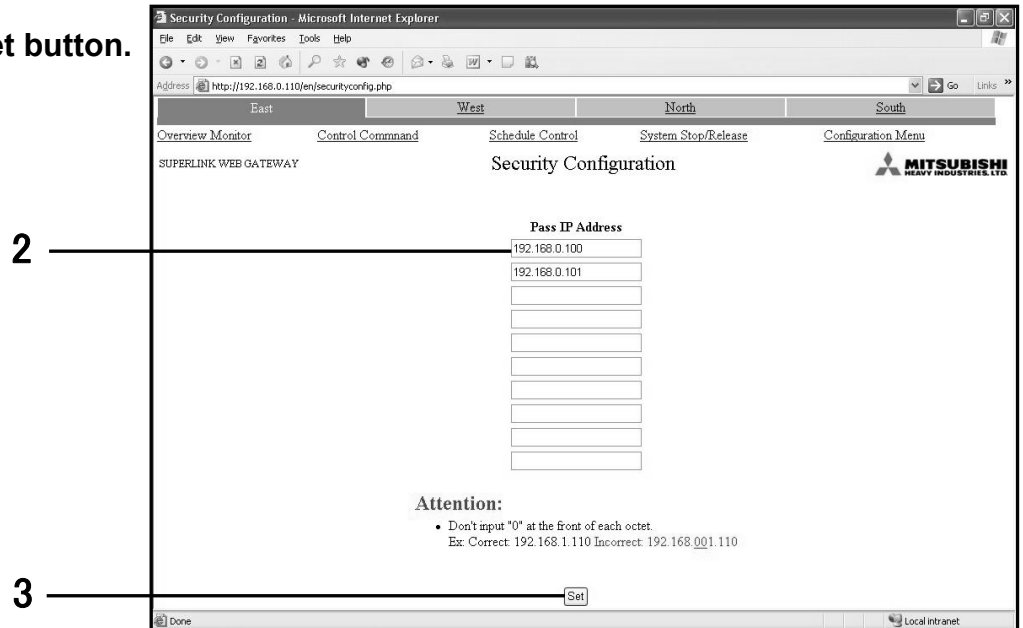
Done Local intranet

## ■ Security Configuration screen (Admin can use this screen.)

This screen is which the IP address filtering can be set.

**Note** Be careful not to make any mistakes in setting the IP address.  
No addresses are set at the factory, so any personal computer with any IP address can access WEB Gateway. However, if even one IP address is entered in this screen for which access is permitted, WEB Gateway can be accessed from only the personal computer with that address.

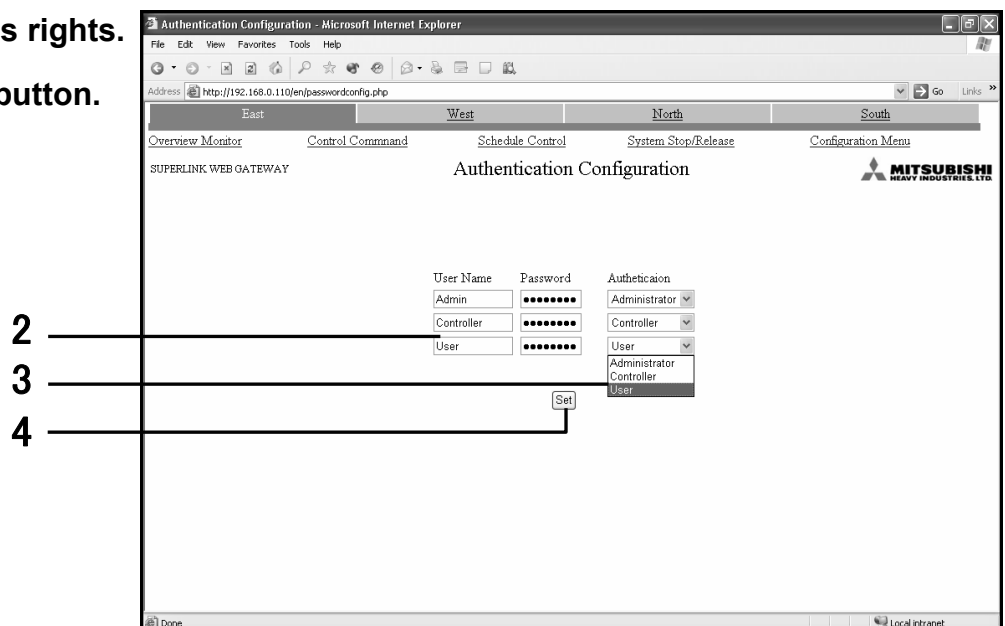
1. In the Configuration Menu screen, click “Security Configuration”. (See p. 10.)
2. Input the IP address of the personal computer for which access is permitted.
3. Click the Set button.



## ■ Authentication Configuration screen (Admin can use this screen.)

This screen is used to set and change the User Name, Password, and Authentication to each screen when logging in to this Gateway.

1. In the Configuration menu screen, click “Authentication Configuration”. (See p. 10.)
2. Input the User Name and Password.  
Input a User Name that is within 10 bytes and a Password that is within 8 bytes in length.
3. Select the access rights.
4. Click the “Set” button.

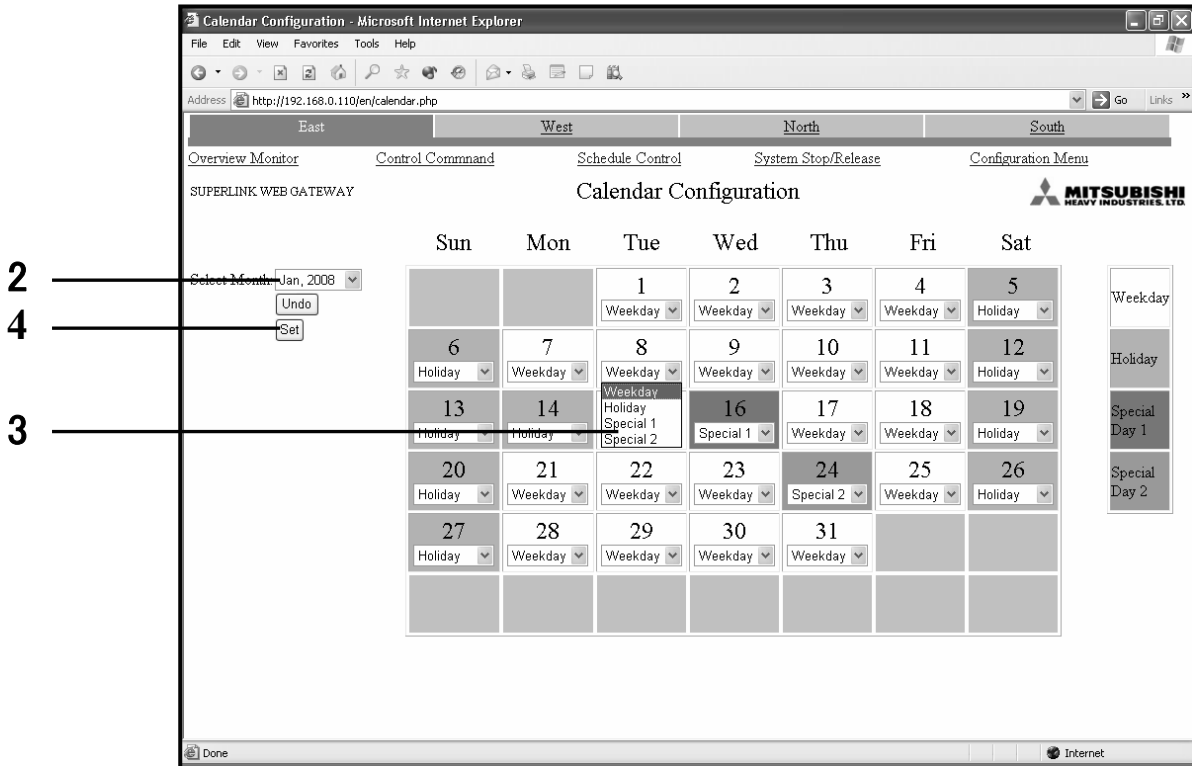


## ■ Calendar Configuration screen (Admin can use this screen.)

This screen is used to set the special dates for the coming 12 months.

**Note** If change Schedule Master Configuration during this week, can't change Schedule.  
Need to change schedule in Schedule Control screen. (See p. 19.)

1. In the Configuration Menu screen, click **“Calendar Configuration”**. (See p. 10.)  
The calendar for the current month will be displayed.



2. Select the month that you would like to set.

The calendar for the month you selected will be displayed.

(It may take several seconds to draw the calendar screen depending on the network conditions, etc.)

3. Select an item from the pull-down menu.

Normal Days	Date for setting the schedule master for each day of the week
Holiday, Special Day 1, Special Day 2	Date for setting a special schedule master regardless of which day of the week it is

When setting individual days one by one, select from the pull-down menu whether the day is an ordinary day, holiday, special day 1 or special day 2.

4. Click the **“Set”** button.

**Note**

- If you jump to the screen for another month without clicking the “Set” button, or if you click the “Undo” button, all the contents input in this screen will be destroyed, so exercise caution.
- There is one calendar for one WEB Gateway. All the air-con cells in a WEB Gateway are run from the same calendar.
- The calendar in this screen is displayed in the form of year-month-day, but the calendar year is not displayed. For this reason, the calendar settings will not be erased when that day passes, but will be used again the following year as that year's settings.
- Even if the Gateway's power is turned off, the calendar settings are saved to memory.

## ■ Schedule Master Configuration screen (Admin can use this screen.)

The schedule master is the data decided by the kinds of days defined in the Calendar (Monday, Tuesday, Wednesday, Thursday, Friday, Saturday, Sunday, Holiday, Special Day 1, Special Day 2, 10 types). Actual schedule actions are executed by the Schedule Control on the next page. Everyday, at the change of date, the data of the Schedule Control are shifted by one day, and one day data is copied from the Schedule Master to the 7th day data of the Schedule Control.

**Note** The data of the Schedule Master will copied and activated form 7 days after.

If the data of the Schedule Master is required to be activated immediately, set the date of this WEB Gateway as 7 days advanced temporally by the Date Time Set screen (see p.24.), then, reset the date as the right date. The entire data of the Schedule Control is set as the Schedule Master immediately, and executed.

**Note** If change Schedule Master Configuration during this week, can't change Schedule.

Need to change schedule in Schedule Control screen. (See p. 19.)

### 1. In the Configuration menu screen, click “Schedule master Configuration”. (See p. 10.)

In the initial screen, the air-con cell of lowest cell No. is displayed.

### 2. Select the air-con cell name and the schedule date.

The display will change to the corresponding Schedule master Configuration screen.

### 3. Select and input the desired settings for each schedule item.

In this screen, the following items can be set as schedule items.

Time	00:00 ~ 23:59 (1 minute intervals.)
On/Off	Blank (not specified), On, Off
Mode	Blank (not specified), Auto, Heating, Cooling, Fan, Defrost
Fan Speed	Blank (not specified), Powerful, High, Medium, Low
Set Point	Blank (not specified), 18.0°C ~ 30.0°C, 0.5°C increments
Remocon Lock/Unlock	Blank (not specified), Lock, Unlock

5 items (On/Off, Mode, Fan Sped, Set Point, Remocon Lock/Unlock) can be set together for 1 time setting.

Up to 20 settings can be set.

### 4. Click the “Set” button.

**Note**

- If you jump to the screen for another month without clicking the “Set” button, or if you click the “Undo” button, all the contents input in this screen will be destroyed, so exercise caution.
- This schedule master is referred once a day and a new execution schedule edited from it.
- Even if the schedule master is changed, it has no influence on the current execution schedule.
- The schedule master can be copied to another master.
- Select the air-con cell name and desired schedule date of the destination , then click “Copy.”
- In some models of indoor units, cannot be set to Powerful, and cannot be display to it.

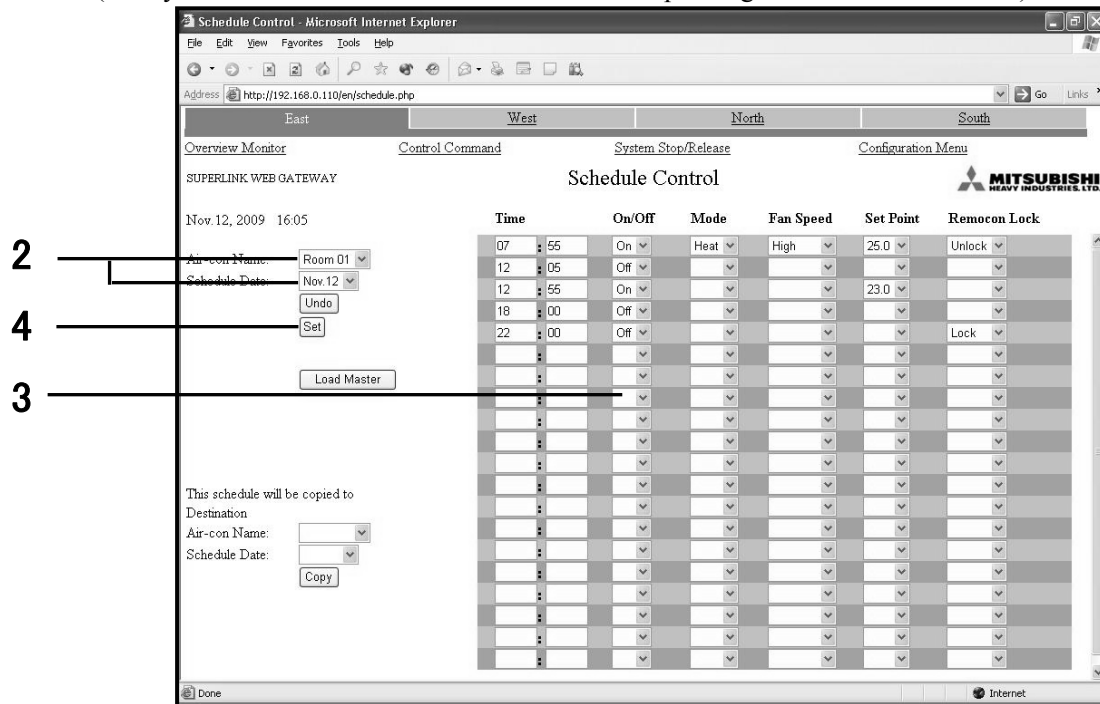
## ■ Schedule Control screen (Admin or Controller can use this screen.)

This screen displays the execution schedule composed from the schedule master and calendar for each air-con cell, and is used to input data and edit the execution schedule. Everyday, at the change of date, the data of the Schedule Control are shifted by one day, and one day data is copied from the Schedule Master to the 7th day data of the Schedule Control.

**Note** If want to change Schedule during this week, change schedule in this Schedule Control screen.

### 1. From the Over View Monitor screen, click “Schedule Control.”

In the initial screen, the execution schedule of the cell with the lowest cell No. is displayed.  
(It may take several seconds to draw this screen depending on network conditions.)



### 2. Select the air-con cell name and corresponding schedule date.

Select the air-con cell name and corresponding schedule for the cell that is being displayed and edited. A seven-day execution schedule from the current day to 6 day in advance can be displayed and edited.

### 3. Select and Input Each Schedule Item

The following items can be set as schedule items in this screen.

Time	00:00 ~ 23:59 (1 minute intervals.)
On/Off	Blank (not specified), On, Off
Mode	Blank (not specified), Auto, Heat, Cool, Fan, Dry
Fan Speed	Blank (not specified), Powerful, High, Medium, Low
Set Point	Blank (not specified), 18.0°C ~ 30.0°C, in 0.5°C increments
Remote Lock/Unlock	Blank (not specified), Lock, Unlock

Up to 20 settings can be set.

### 4. Click the “Set” button

**Note**

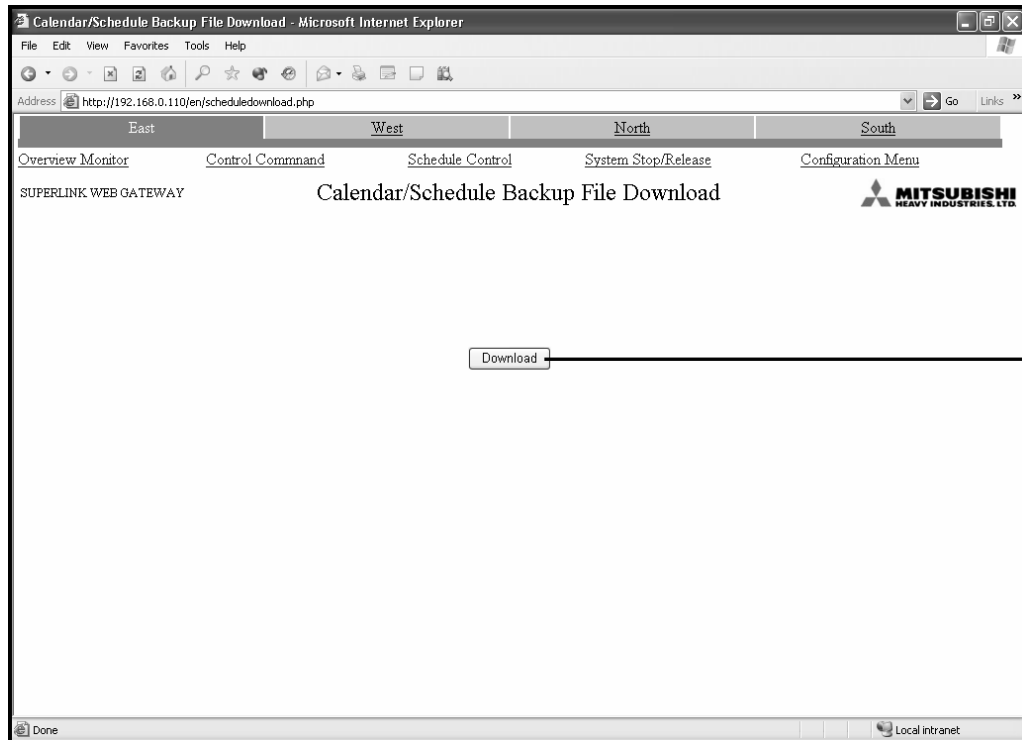
- If you jump to the screen for another month without clicking the Set button, or if you click the “Undo” button, all the contents input in this screen will be destroyed, so exercise caution.
- Clicking the “Load Master” button causes the schedule to be loaded from the annual calendar and schedule master and displayed on the screen. If the “Set” button is then clicked, the execution schedule is set from the master.
- The instructions and display contents in this screen can be copied to another air-con cell or another date. Select the air-con name and corresponding schedule date that is the destination, then click “Copy.”
- This Gateway updates the execution schedule once a day at 00:00 in the middle of the night.
- The actual operation schedule is in accordance with the execution schedule displayed in this screen, but when the system is operated using the remote controller, etc. it may not run in accordance with the schedule.
- When all the indoor units are shut down by a forced stop, not only does operation stop, but the entire execution schedule will not be executed.
- In some models of indoor units, cannot be set to Powerful, and cannot be display to it.

## ■ Calendar/Schedule Backup File screen (Admin can use this screen.)

This screen is used to download or upload the backup files for configurations of the calendar, schedule and execution schedule (called hereafter the schedule backup files).

### <When downloading>

1. From the Configuration Menu screen, click "Calendar/Schedule Backup File Download". (See p. 10.)

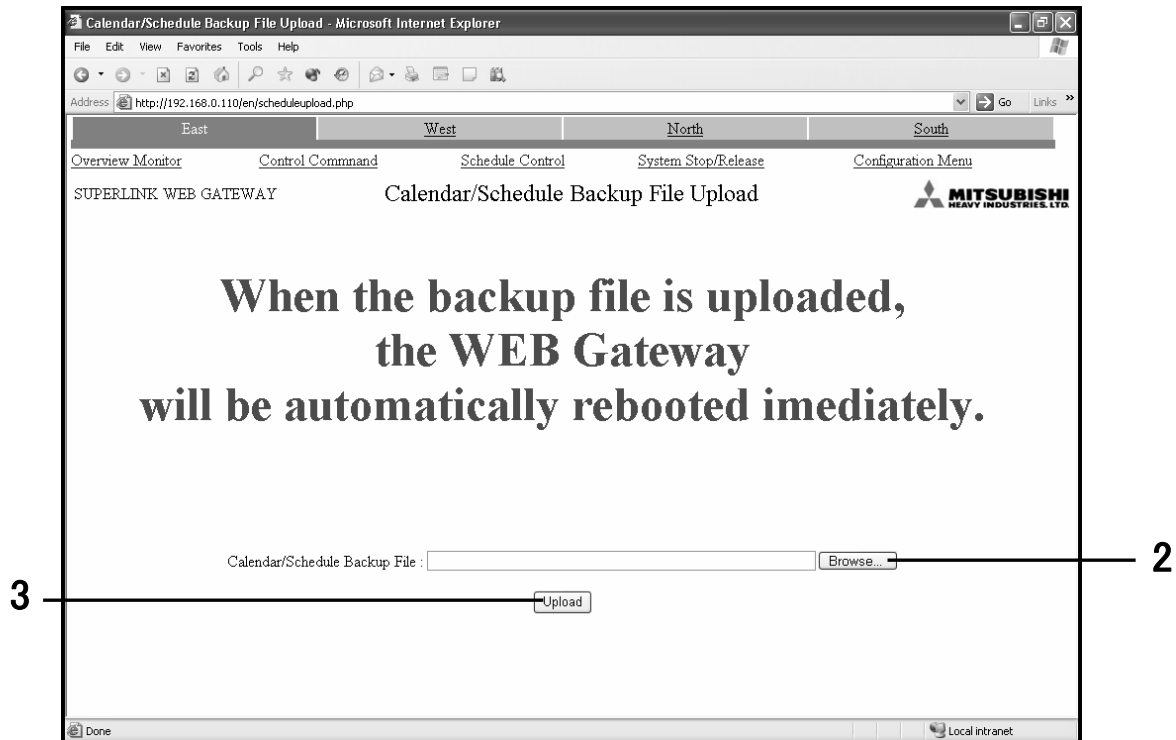


2

2. Click the Download button.
3. Specify the saving address and save.  
File "schedule.tgz" is saved.

### <When uploading>

1. From the Configuration Menu screen, click "Calendar/Schedule Backup File Upload". (See p. 10.)



2. After clicking the Reference button, select the file to upload.

#### Note

Since the schedule backup file is a binary file special to this Gateway, the downloaded file cannot be edited or uploaded.

3. Click Upload button.

#### Note

After the upload of schedule backup file, this Gateway reboots automatically. Access once again approx. 5 minutes later.

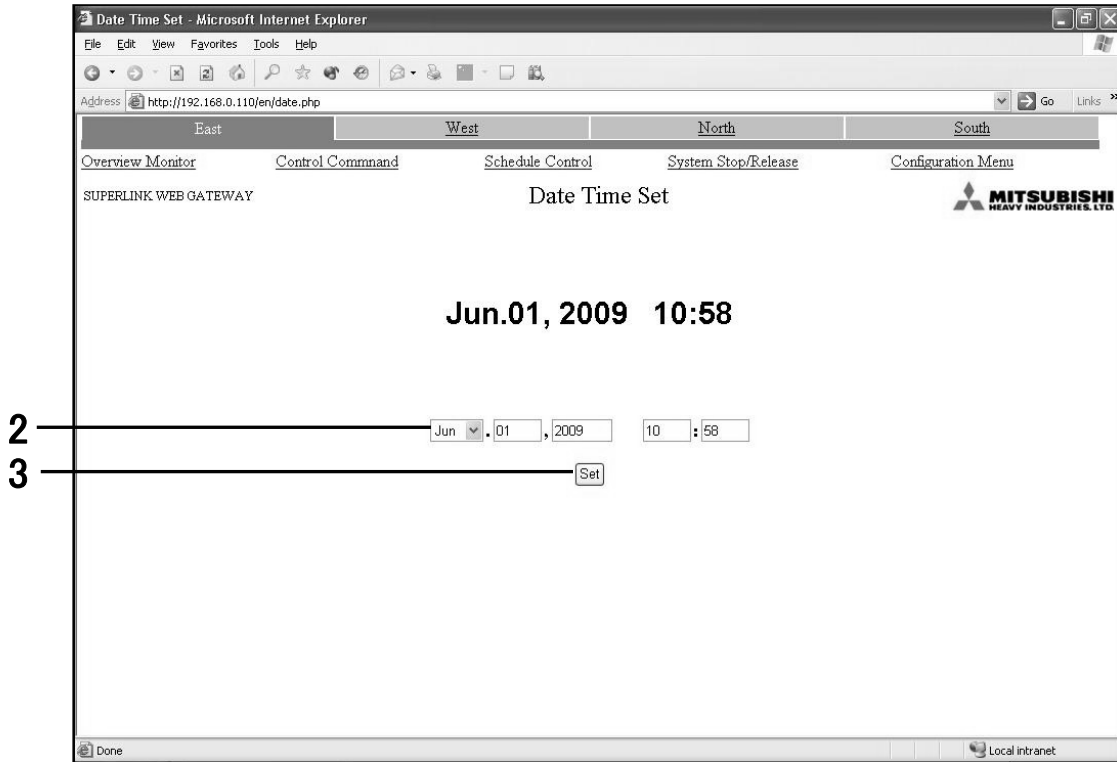
## ■ Date Time Set screen (Admin can use this screen.)

This screen is used to set the internal time clock on the CPU board in the WEB Gateway.

The schedule control is executed in accordance with this clock setting, so in order to assure correct operation, it is necessary to correct the setting on this clock.

### 1. In the Configuration Menu screen, click “Date Time Set”. (See p. 10.)

In the initial screen, the Gateway’s current time is set in the time input column.



### 2. Input the time.

The time can be input within the following ranges.

AD Year	2000 ~ 2037
Month	1 ~ 12
Day	1 ~ 31
Hour	0 ~ 23 (24-hour notation)
Minute	0 ~ 59

### 3. Click the “Set” button.

#### Note

- The time is refreshed automatically once every 2 seconds, but there is an error of several seconds. The time needed for a refresh screen depends on various conditions, and therefore may take several seconds.
- Leap year processing is also executed automatically.



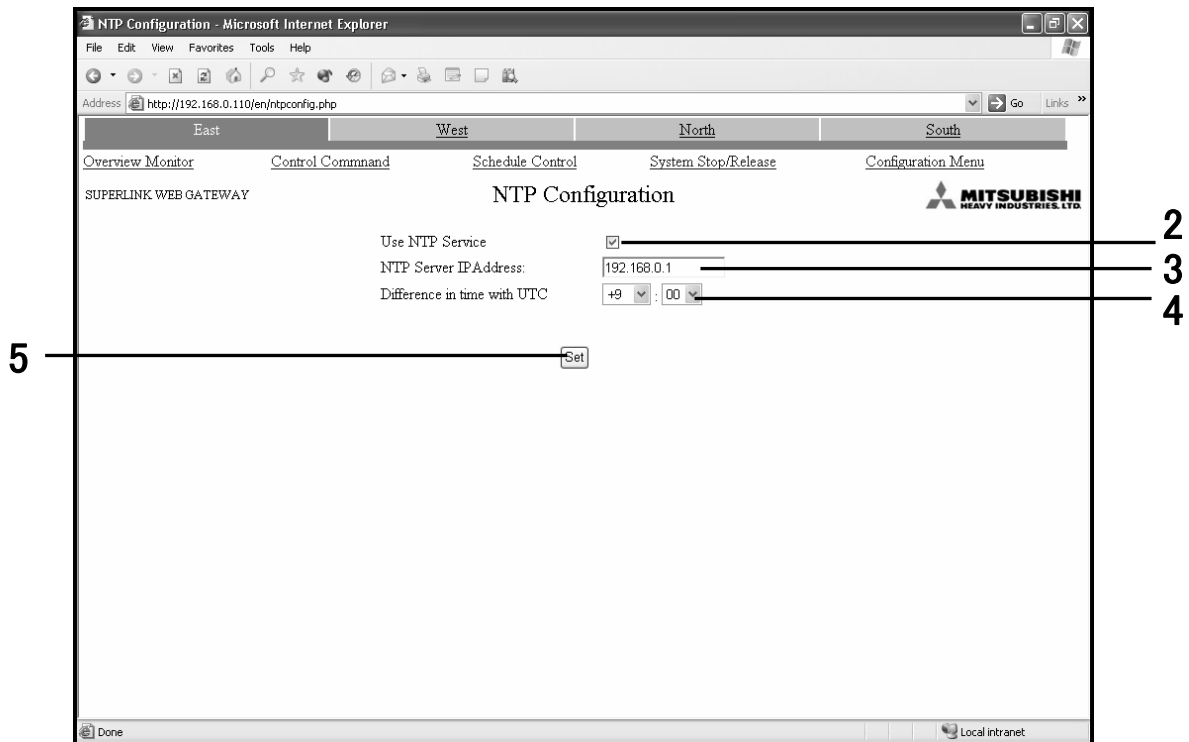
## ■ NTP Configuration screen (Admin can use this screen.)

This screen is used to set the automatic synchronization to an NTP server for the WEB Gateway's clock.

### Caution

Before setting this NTP configuration, be sure to set correct clock time. (See p. 22.)

1. In the Configuration screen, click "NTP Configuration". (See p. 10.)



2. When using the NTP function, put a tick(✓) in the "Use NTP Service" check box.
3. Input the IP address of the NTP server.

### Note

Consult with the network administrator about the IP address of the NTP server.

4. Select difference in time with UTC of area to use.

### Caution

If the "Difference in time with UTC" is not set, the WEB Gateway's clock will be set as wrong clock.

### Note

When the NTP service is not used, the "Difference in time with UTC" setting is not necessary.

5. Click the "Set" button.

### Note

The WEB Gateway will be rebooted automatically when the "Set" button is pressed. After that, the WEB Gateway can not be accessed for about 5 minutes. Please login again.

# ■ Troubleshooting

IP address was forgotten.	Consult with the dealer where you purchased this product.
Incorrect IP address was configured.	
Password was forgotten.	
Security setting IP address was forgotten.	
The screen flickers.	During redraw the screen, this occurs for an instant until the new screen is displayed. This is an inherent characteristic of Internet Explorer and there is no problem. If the flickering becomes pronounced, set the refresh rate at 60seconds.
Pop-up window cannot be seen.	After a pop-up window opens up to display an individual monitoring screen, if you click on the Over View Monitor screen window in the background, the individual monitoring window will be hidden. Select the pop-up window again by clicking on the button in the task bar at the bottom of the screen, or select the desired individual monitoring window from the overall monitoring screen again.
The screen shows connection errors.	Push "Update" switch in Internet Explorer. Next, restarts Internet Explorer.
The PC freezes in a couple of months each.	Restart Internet Explorer regularly. Please confirm whether the "Display Restart Message" check box is ticked on Communication/Buzzer Configuration screen. (see p.14) If the OS of the PC is Windows Vista, please confirm the version. In case it is initial version, update it to SP1 or above.

# MEMO



---

**AIR-CONDITIONING & REFRIGERATION SYSTEMS HEADQUARTERS**

3-1, Asahi, Nishibiwajima-cho, Kiyosu, Aichi, 452-8561, Japan